


MAIN CHARACTERISTICS

Length overall 32.00 m
 Beam 10.50 m
 Max. draught 4.30 m
 Tonnage 389 UMS
 Class BV I ✕Hull ✕MACH ✕ Salvage Tug Fifi1 AUT UMS

PROPULSION AND MACHINERY

Main engine 2 Wartsila 9L20
 Total output 4680 HP/2 x 1800 kW
 Propulsion 2 x Z-drives Schottel SRP 1215 CP
 Speed 13 knots

DECK EQUIPMENT

Forward towing winch 1 drum 200 m steel wire Ø 48
 Aft towing winch 2 drums 600 m steel wire Ø 48
 Hook Data Hidrokil DIH 70-130 / 70 T

POLLUTION AND FIRE CONTROL

Fire pump 2700 m³/h
 Foam compound capacity 17 m³

BUILDER

Yard Medyilmaz Shipyard, Turkey
 Year built 2005

CARACTÉRISTIQUES PRINCIPALES

Longueur hors tout 32,00 m
 Largeur 10,50 m
 Tirant d'eau maxi 4,30 m
 Jauge 389 UMS
 Classe BV I ✕Hull ✕MACH ✕ Salvage Tug Fifi1 AUT UMS

PROPULSION ET AUXILIAIRES

Moteur principal 2 Wartsila 9L20
 Puissance installée 4680 HP/2 x 1800 kW
 Propulsion 2 x Z-drives Schottel SRP 1215 CP
 Vitesse 13 nœuds

EQUIPEMENT DE PONT

Treuil avant 1 drum 200 m steel wire Ø 48
 Treuil arrière 2 drums 600 m steel wire Ø 48
 Croc Data Hidrokil DIH 70-130 / 70 t

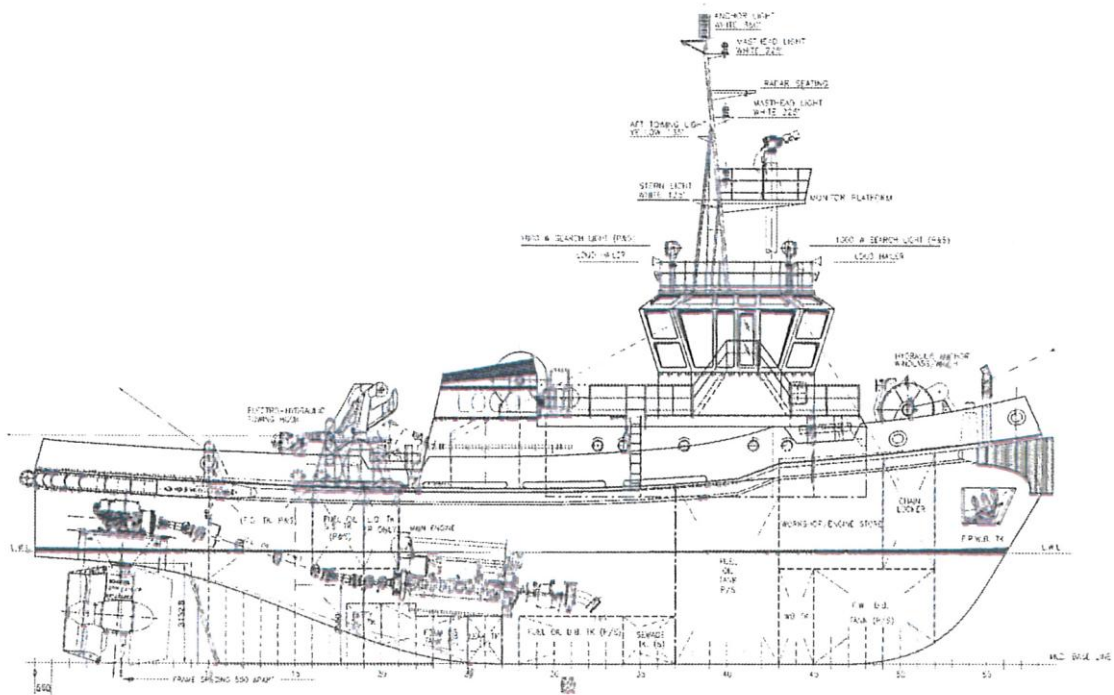
LUTTE ANTI-INCENDIE ET ANTIPOLLUTION

Pompe à incendie 2700 m³/h
 Capacité d'agent émulsifiant 17 m³

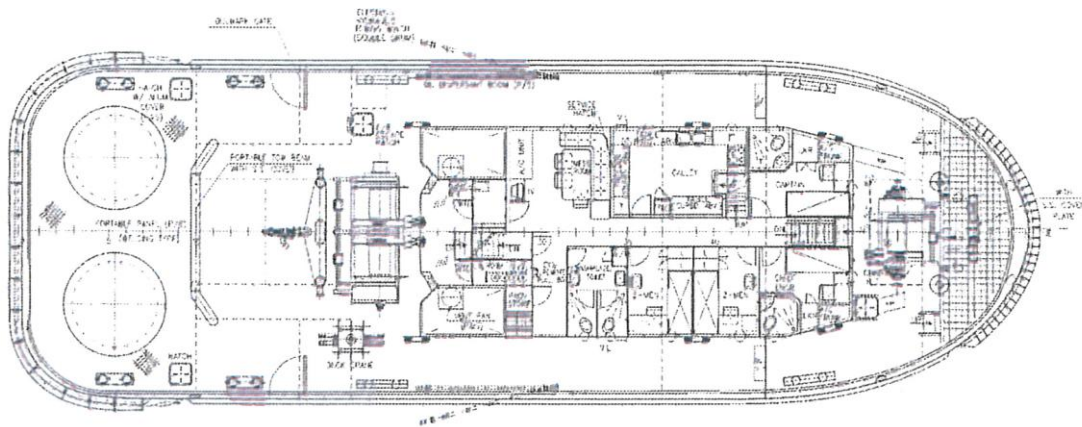
CONSTRUCTEUR

Chantier Medyilmaz, Turquie
 Année de construction 2005

VB BRETAGNE
FIFI 1 / 60 TBP
ASIMUTH STERN DRIVE TUG



OUTBOARD PROFILE



MAIN DECK PLAN

